

# Sage

♩ = 128

12 4

**A** *Whole tune 8va.*

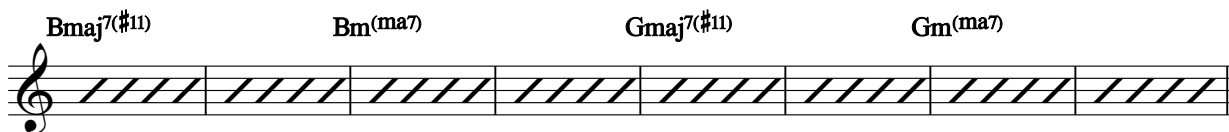
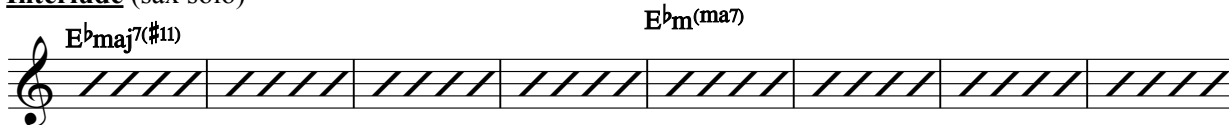
**B**

**C**

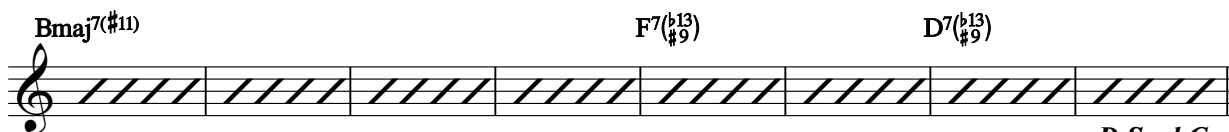
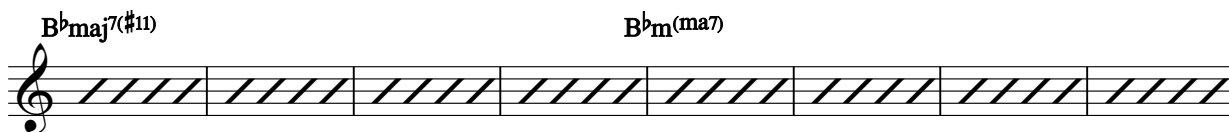
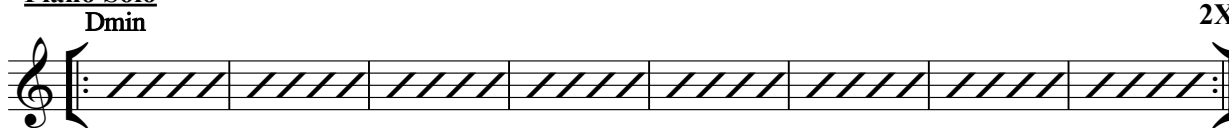
To CODA  
last time



**Interlude** (sax solo)



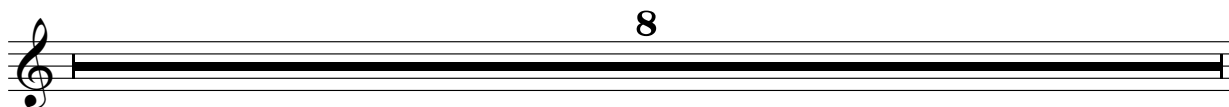
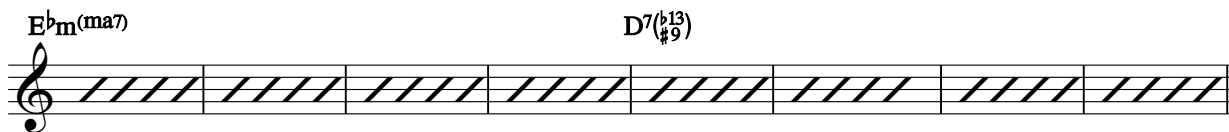
**Piano Solo**



D.S. al Coda

**CODA**

**Interlude** (sax solo)



A single musical staff in treble clef. It contains a sequence of notes and rests: a whole rest, a quarter note G4, a quarter note A4, a quarter note B4, a quarter rest, a quarter note C5, a quarter note B4, a quarter note A4, a quarter note G4, a quarter note F4, a quarter note E4, a quarter note D4, and a whole note C4.

Gm7                      Am7                      Cm7                      Bbm7                      Ebm7

A musical staff in treble clef containing five measures of slash notation (//). Below the staff is the text: *Sax and piano accompany guitar solo*

Fm7                      Bbmaj9 (no 3rd)

A musical staff in treble clef. It contains three measures of slash notation (//), followed by a double bar line with repeat dots. After a whole rest, there is a measure with a fermata and the number 8 above it, indicating an 8-measure rest.